



ABV Series Sub-Sea Actuator

Sub-Sea Hydraulic Actuators SA-HDA

CHARACTERISTICS

- Hydraulic actuator.
- Double acting (single acting on request).
- Design life 30 years.
- Operable by R.O.V.
- Manual override on request.
- Mechanical/Tactile valve position indicator (remote on request).
- Separate flushing ports.
- Fully pressure equalization to assure complete internal corrosion protection, and to obtain the required performances at every operating depth.
- Possibility of installing the actuator on the valve by means of diver or R.O.V. assistance.
- Pressure containing parts according to ASME VIII.
- Power hydraulic oil cleanness according to NAS 6.



Representative for Benelux Countries
Energy Management Systems BV
Phoenixstraat 37 1801 GA Alkmaar
Telf. +31 (0) 72 5401147 Fax. +31 (0) 72 5400992
web : www.emsvalvesinstruments.com
email: info@emsvalvesinstruments.com

SUB-SEA SYSTEM

- Sub-sea Hydraulic Actuator.
- R.O.V. Interface.

ON REQUEST

- Quick Clutch-Declutch System.

Design and dimensions may be subject to change without notice, except the dimensions established by international standard specifications.

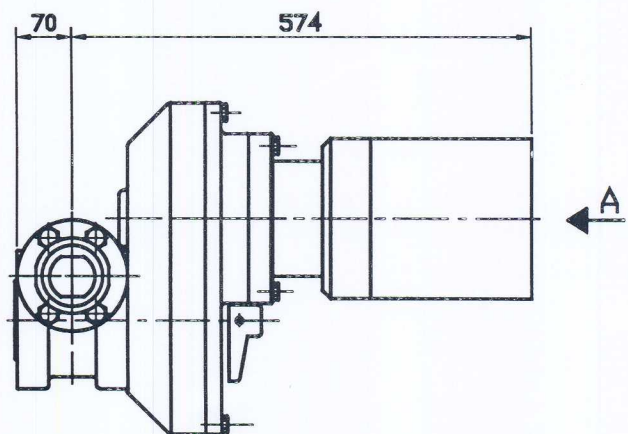
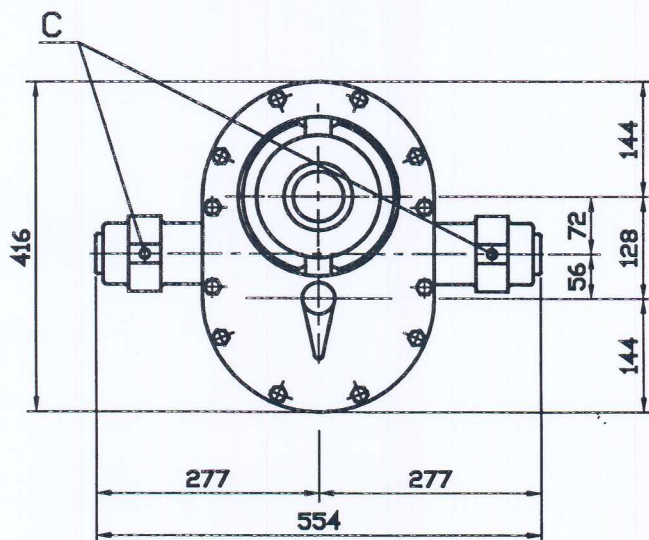
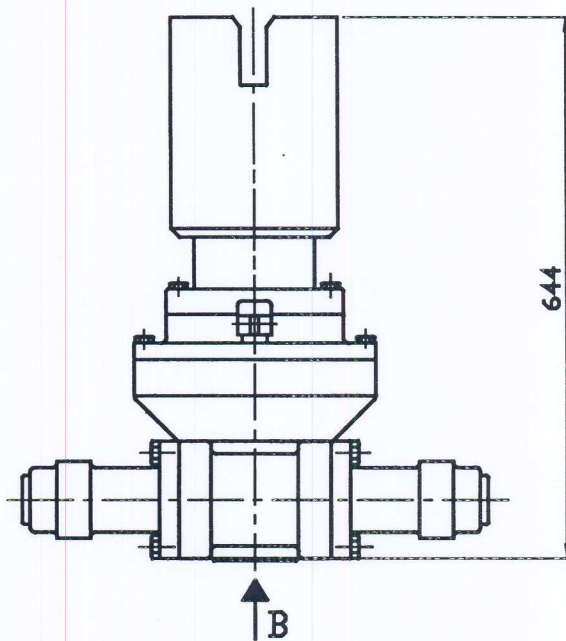


ABV Series Sub-Sea Actuator

Sub-Sea Hydraulic
Actuators SA-HDA

DESCRIPTION

- A. Rov Mechanical Interface
API 17D type 4
- B. 2"/2500 Ball Valve Interface
- C. Hydraulic Connection 1/2 NPT

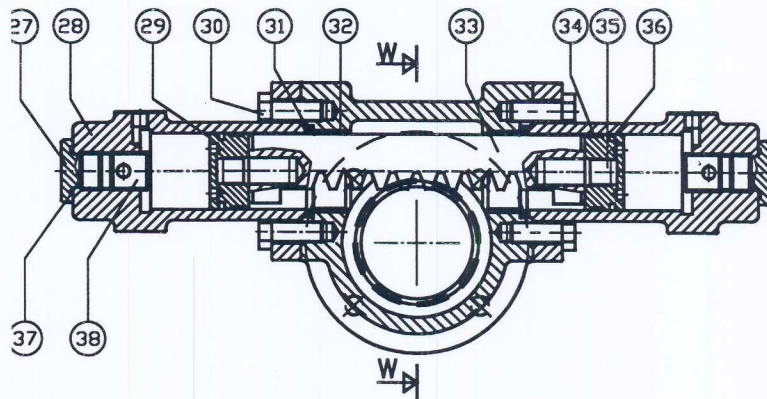


Design and dimensions may be subject to change without notice, except the dimensions established by international standard specifications.



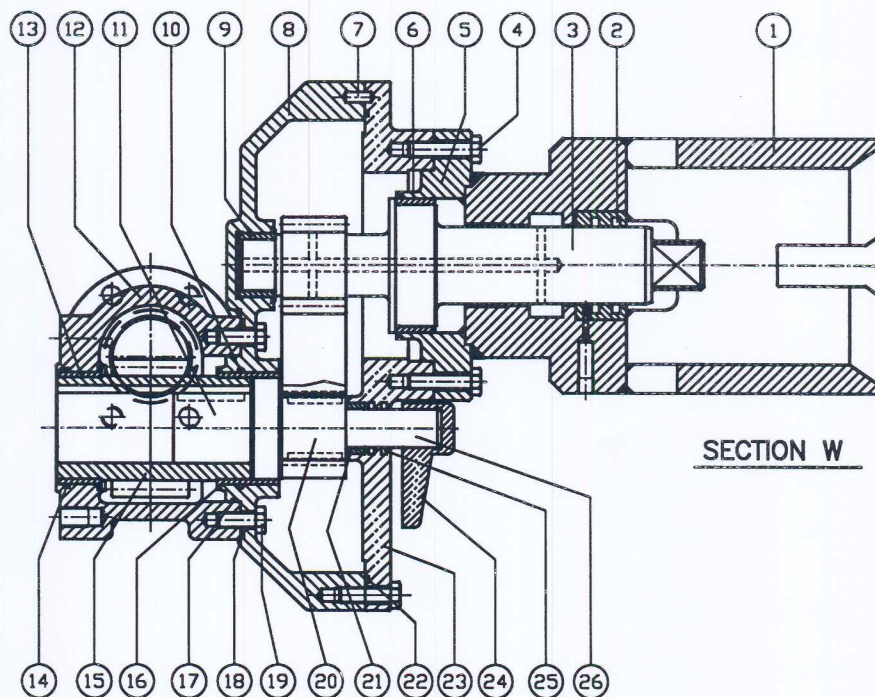
ABV Series Sub-Sea Actuator

Sub-Sea Hydraulic Actuators SA-HDA



DESCRIPTION

1. Rov Interface
2. Seal
3. Rov Shaft
4. Screw
5. Flange
6. Bushing
7. Pin
8. Gear Housing
9. Bushing
10. O-Ring
11. Gear Shaft
12. Actuator Housing
13. Bushing
14. O-Ring
15. Pinion
16. Bushing
17. O-Ring
18. O-Ring
19. Screw
20. Gear
21. Bushing
22. O-Ring
23. Gear Cover
24. Position Indicator
25. Seal
26. Shaft
27. Cylinder Plug
28. Cylinder
29. Piston
30. Screw
31. O-Ring
32. Bushing
33. Rack
34. Sleeding Ring
35. Screw
36. Seal
37. O-Ring
38. Stopper



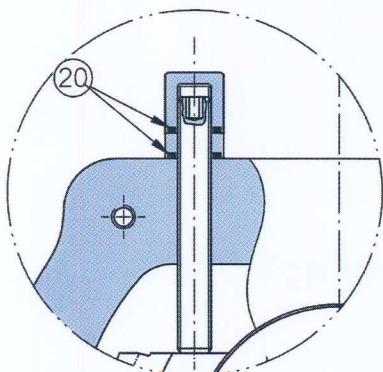
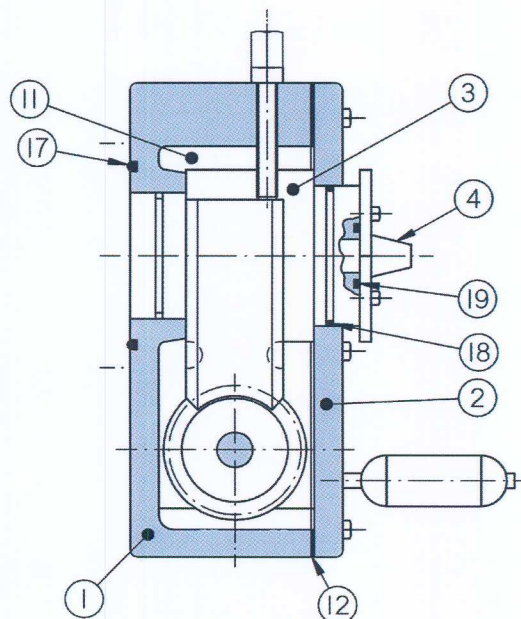
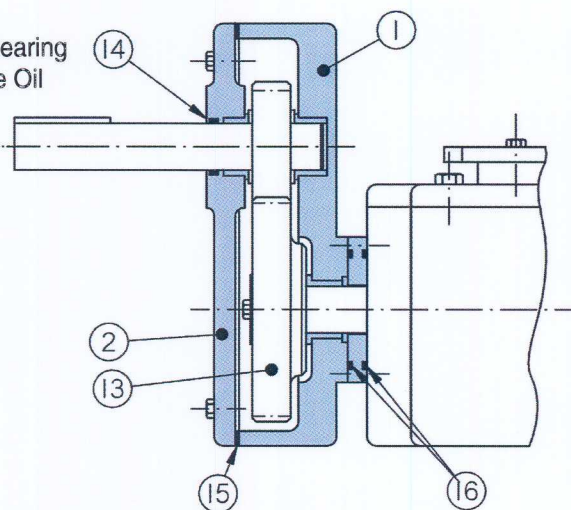
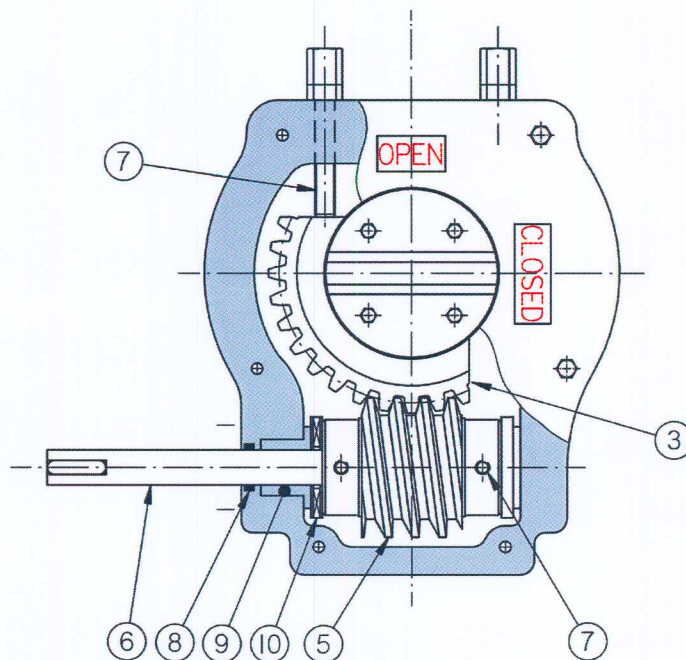
Design and dimensions may be subject to change without notice, except the dimensions established by international standard specifications.



ABV Typical Sub-Sea Actuators Mechanically Operated (Manual or by R.O.V.)

DESCRIPTION

1. Body
2. Coverplate
3. Quadrant
4. Position Indicator
5. Worm
6. Shaft
7. Set-screw
8. Seal
9. Bushing
10. Needle-Bearing
11. Protective Oil
12. Gasket
13. Gear
14. Seal
15. Gasket
16. O-Ring
17. O-Ring
18. Seal
19. O-Ring
20. O-Ring



Design and dimensions may be subject to change without notice, except the dimensions established by international standard specifications.



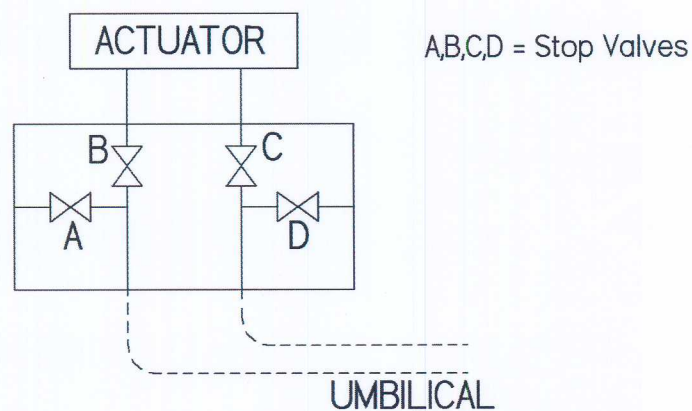
ABV Operating Systems

R.O.V. Interface

All the **ABV S.r.l.** actuators can be designed to be operated also by R.O.V. (Remote Operated Vehicle). The design is normally in accordance to API 17D STD, but **ABV S.r.l.** can design special interfaces according to customers requirements.

Hydraulic Devices

The **ABV S.r.l.** hydraulic actuators can be equipped with devices according to customer needs. These devices can be designed to be operated also without human attendance. The most frequent customer requests are flushing valves and hydraulic control valves.



Typical control system (manifold type)
for umbilical flushing

Manual Override

On request, actuators can be provided with manual override, which can be mechanical (wheel) or hydraulic (pump). The adopted solution and used materials are according to customer requirements.

Design and dimensions may be subject to change without notice, except the dimensions established by international standard specifications.